

232213

# GRAND LAKE TOWNE

## PLAT NO. 3

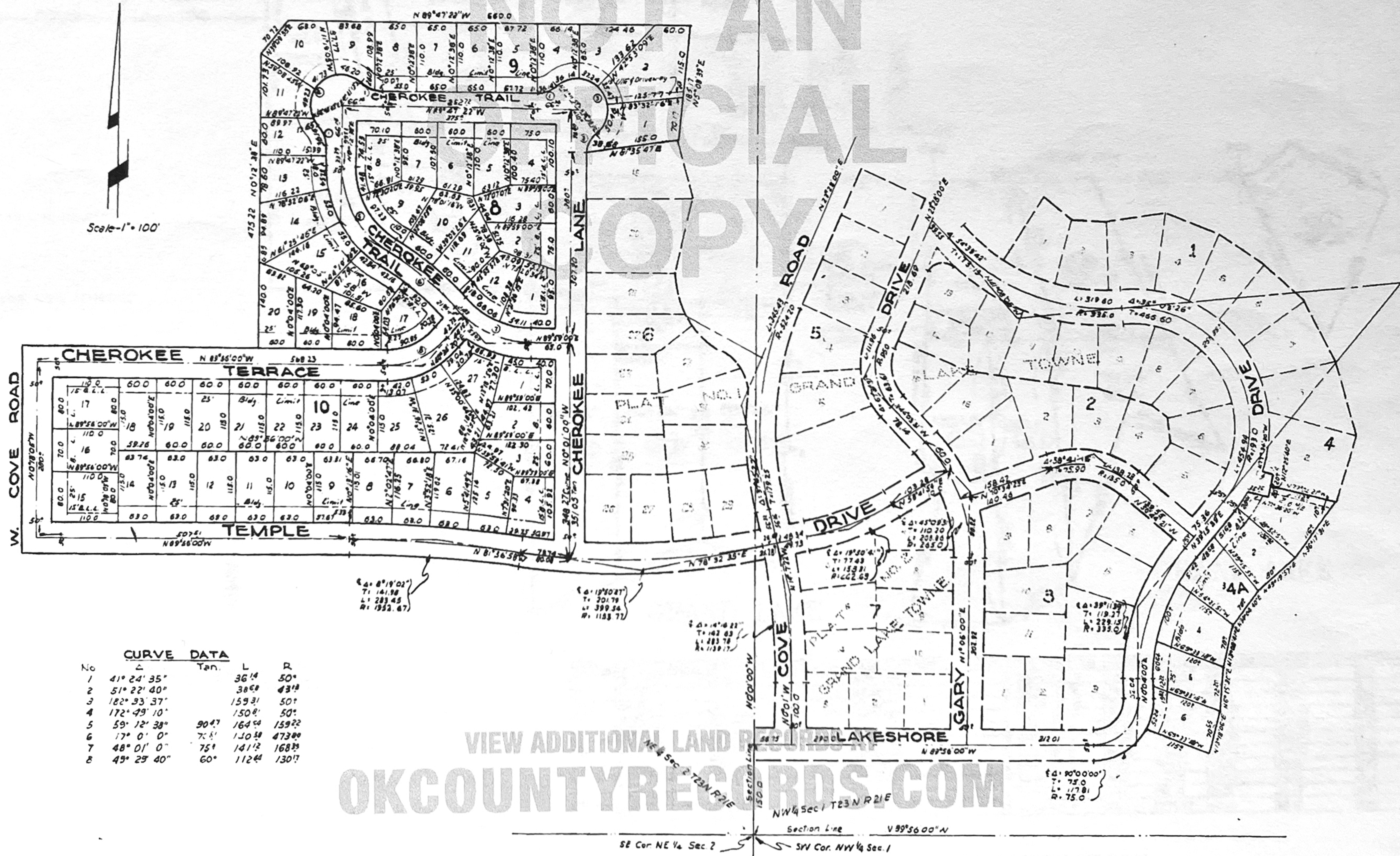
A PART OF THE NW 1/4, SEC. 1 & NE 1/4 SEC. 2, T25N, R21E., 1.M.

MAYES COUNTY, OKLAHOMA

EXHIBIT 'A' OCTOBER 3, 1966

STATE OF OKLAHOMA }  
COUNTY OF MAYES }  
This instrument was filed for record  
at 1:30 P.M. on Oct 3, 1966  
OCT 4 1966

Certified +  
Exhibit  
booked  
book 310 Page 7



No	Δ	Tan.	L	R
1	41° 24' 35"		36.14	50.0
2	51° 22' 40"		38.89	43.18
3	182° 33' 37"		159.31	50.0
4	172° 49' 10"		150.8	50.0
5	59° 12' 38"	90.47	164.04	159.22
6	17° 0' 0"	7.8	130.58	473.80
7	48° 01' 0"	75.1	141.12	168.39
8	49° 29' 40"	60.0	112.44	130.17

VIEW ADDITIONAL LAND RECORDS AT  
**OKCOUNTYRECORDS.COM**

M. G. ...  
11  
103